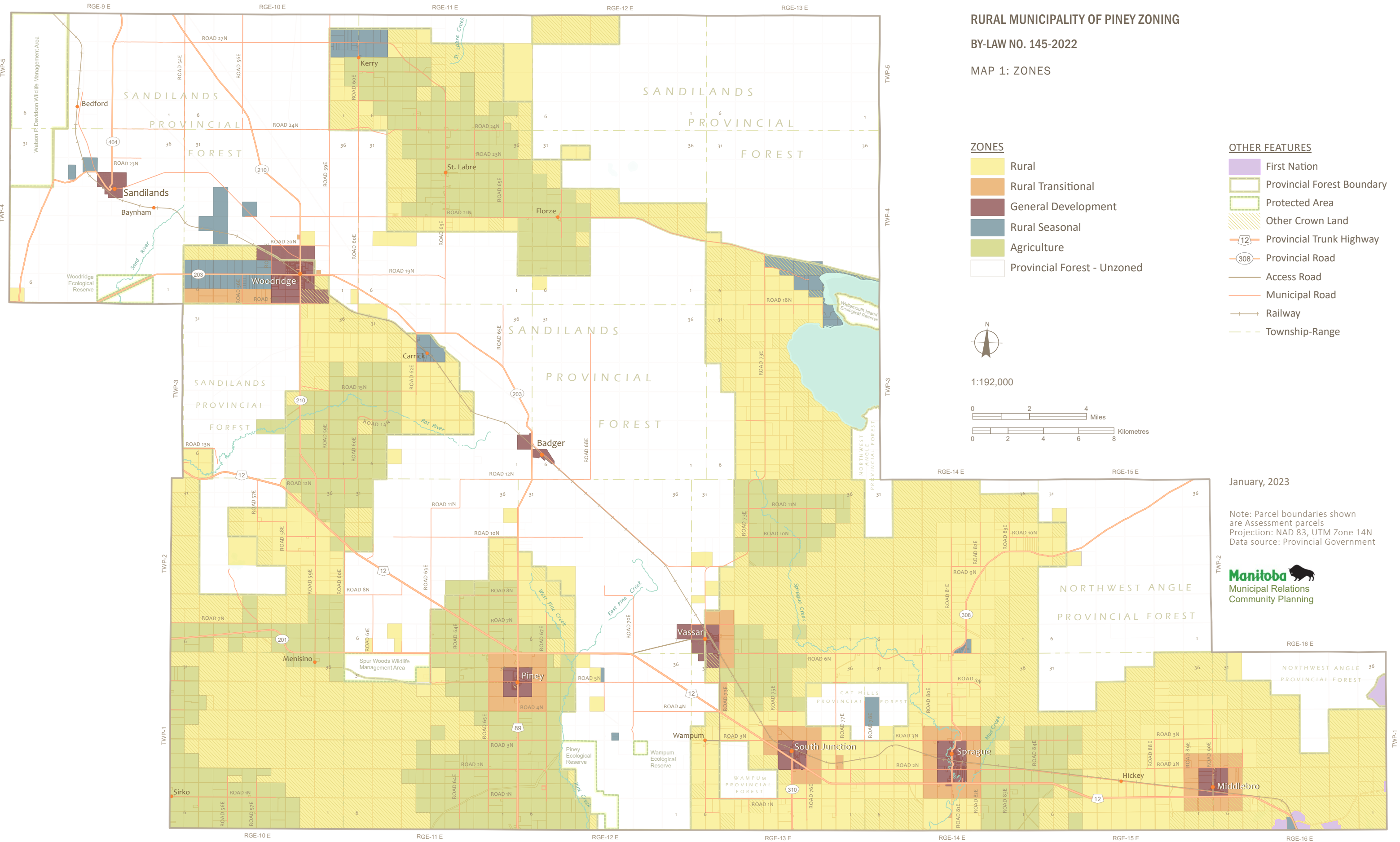


RURAL MUNICIPALITY OF PINEY ZONING

BY-LAW NO. 145-2022

MAP 1: ZONES



ZONES

- Rural
- Rural Transitional
- General Development
- Rural Seasonal
- Agriculture
- Provincial Forest - Unzoned

OTHER FEATURES

- First Nation
- Provincial Forest Boundary
- Protected Area
- Other Crown Land
- Provincial Trunk Highway
- Provincial Road
- Access Road
- Municipal Road
- Railway
- Township-Range



1:192,000



January, 2023

Note: Parcel boundaries shown are Assessment parcels
Projection: NAD 83, UTM Zone 14N
Data source: Provincial Government

