

Woodridge Trail

TOTAL LENGTH

6.55 miles

TOTAL COST

\$423,600 unpaved

\$1,056,000 paved

Short-term

Length: 0.8 miles

Cost: \$52,480 unpaved

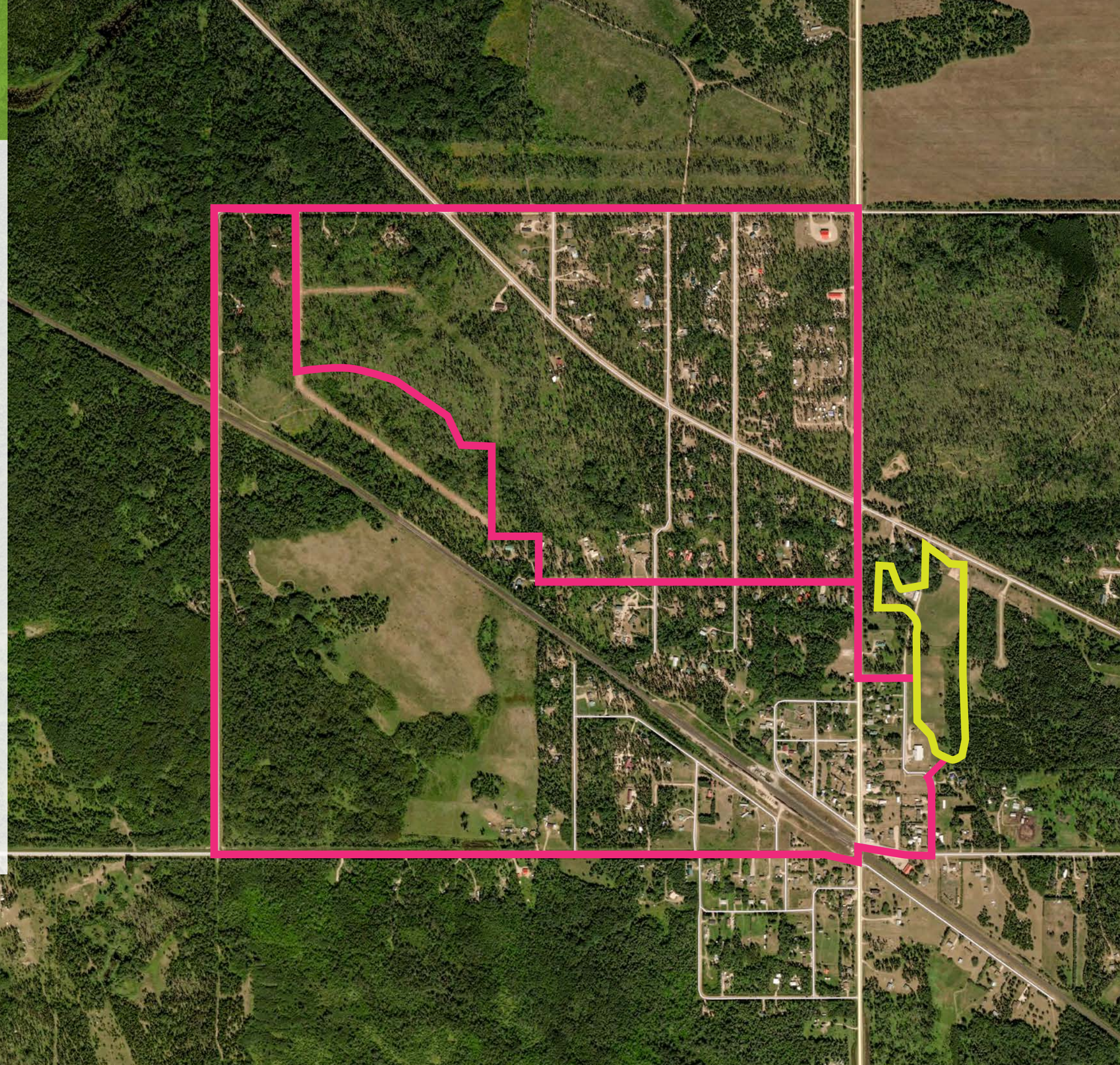
\$129,700 paved

Medium-term

Length: 4.25 miles

Cost: \$371,120 unpaved

\$926,300 paved



Sprague Trail

TOTAL LENGTH

2.2 miles

TOTAL COST

\$144,600 unpaved

\$357,000 paved

Short-term

Length: 1.0 miles

Cost: \$66,320 unpaved

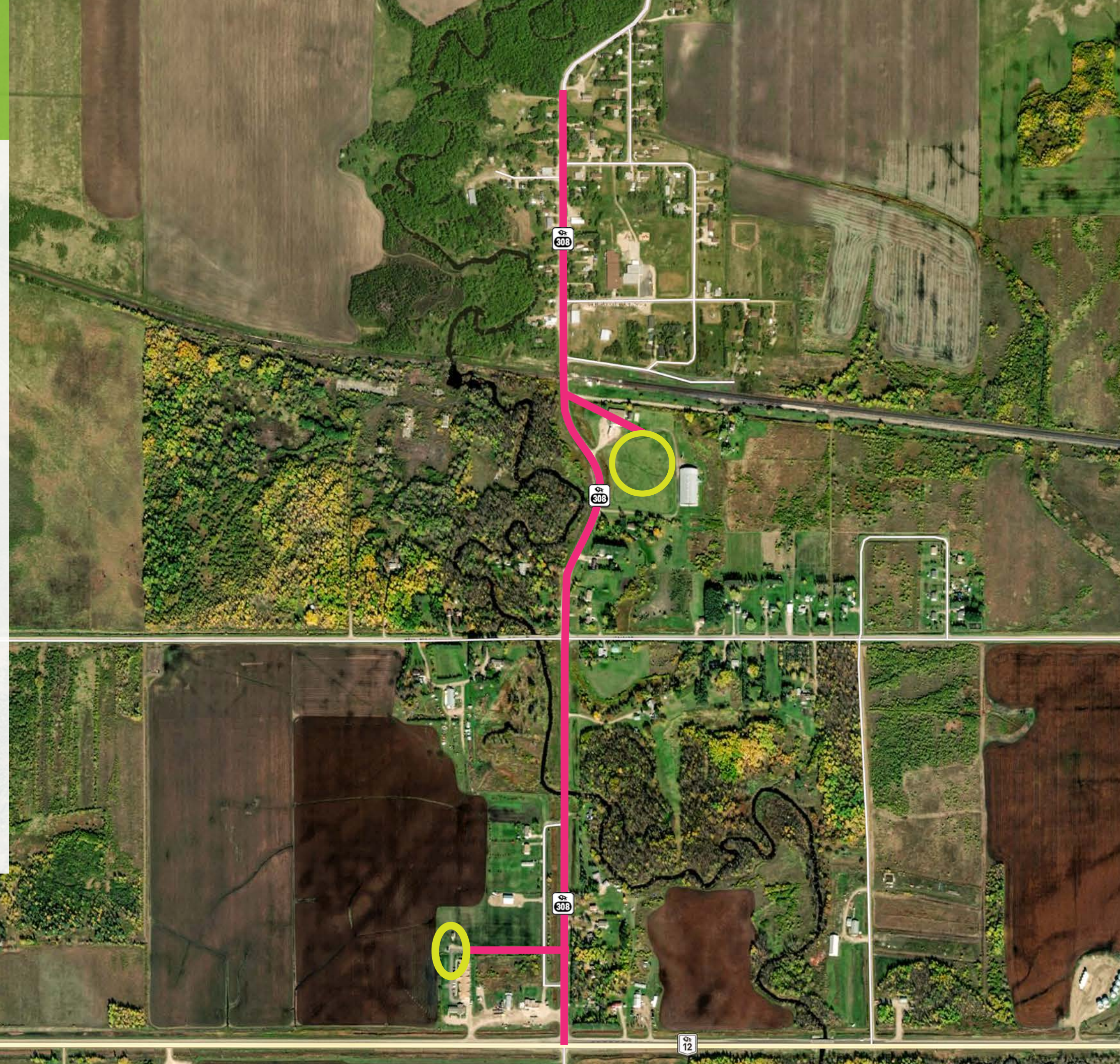
\$162,800 paved

Medium-term

Length: 1.2 miles

Cost: \$78,280 unpaved

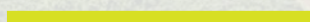
\$194,200 paved

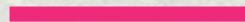


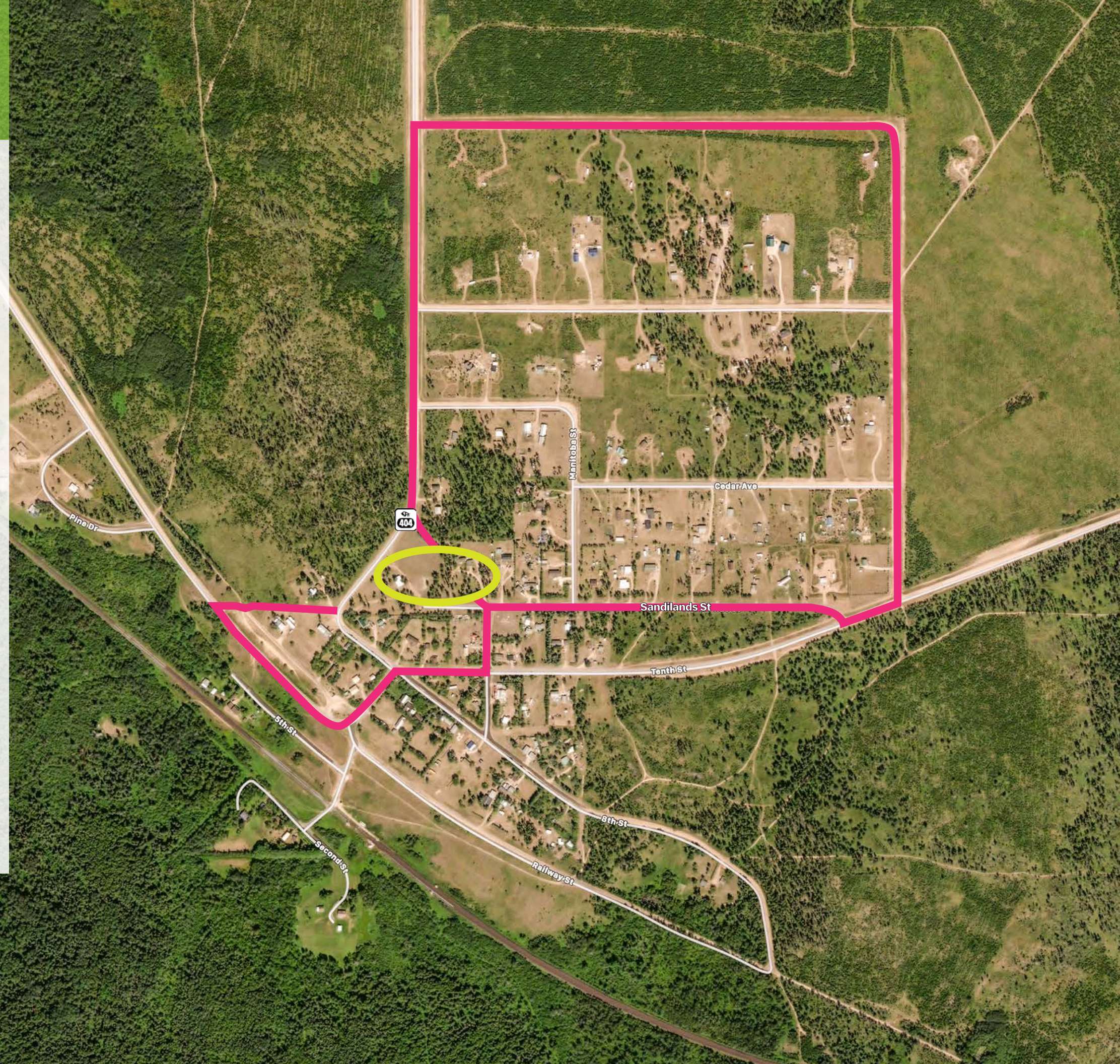
Sandilands Trail

TOTAL LENGTH
3 miles

TOTAL COST
\$196,080 unpaved
\$485,700 paved

Short-term 
Length: 0.5 miles
Cost: \$33,160 unpaved
\$81,400 paved

Medium-term 
Length: 2.1 miles
Cost: \$162,920 unpaved
\$404,300 paved



Piney Trail

TOTAL LENGTH

2.1 miles

TOTAL COST

\$137,160 unpaved

\$339,900 paved

Short-term

Length: 0.5 miles

Cost: \$33,160 unpaved

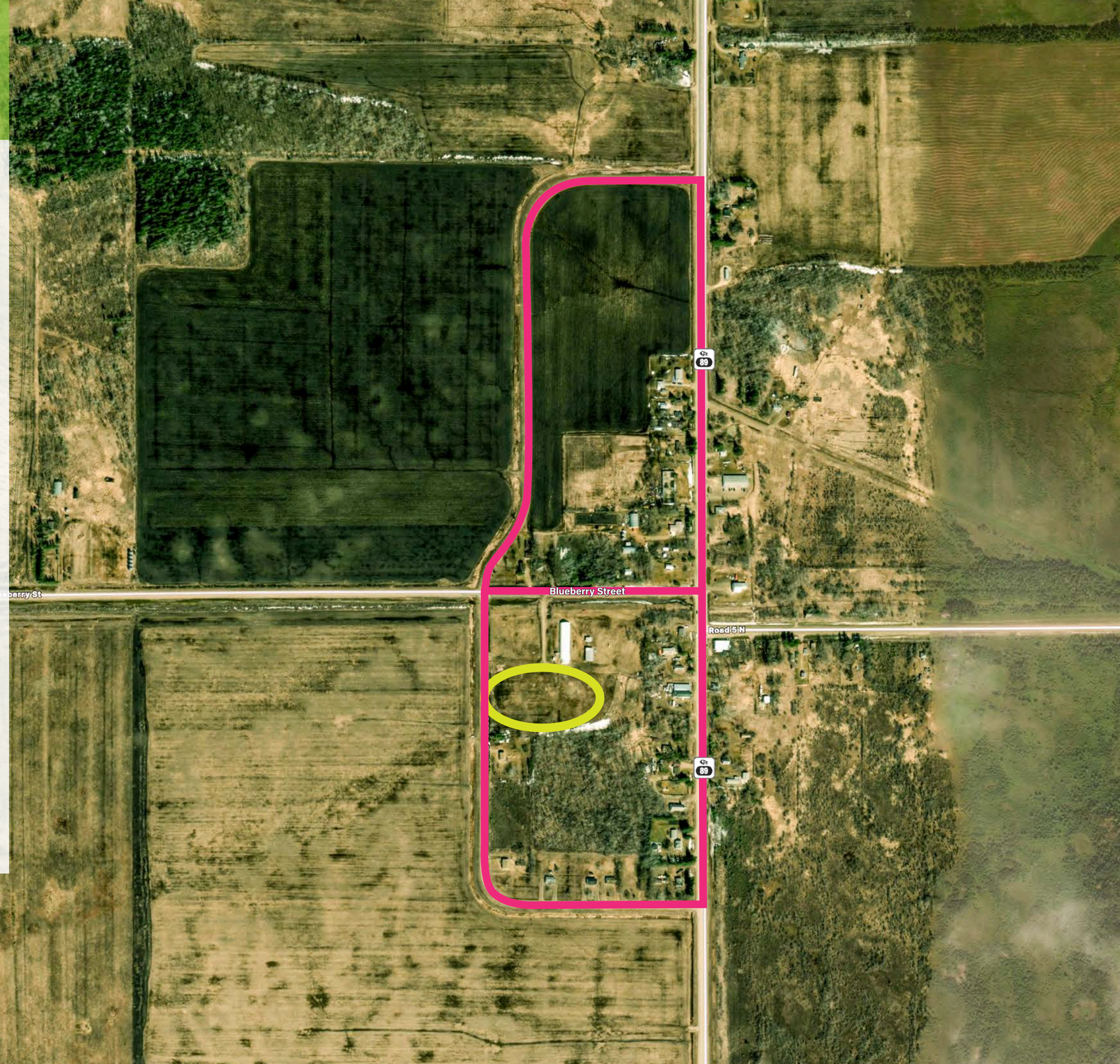
\$81,400 paved

Medium-term

Length: 1.6 miles

Cost: \$104,000 unpaved

\$258,500 paved



Middlebro Trail

TOTAL LENGTH

1.82 miles

TOTAL COST

\$119,160 unpaved

\$294,900 paved

Short-term

Length: 0.5 miles

Cost: \$33,160 unpaved

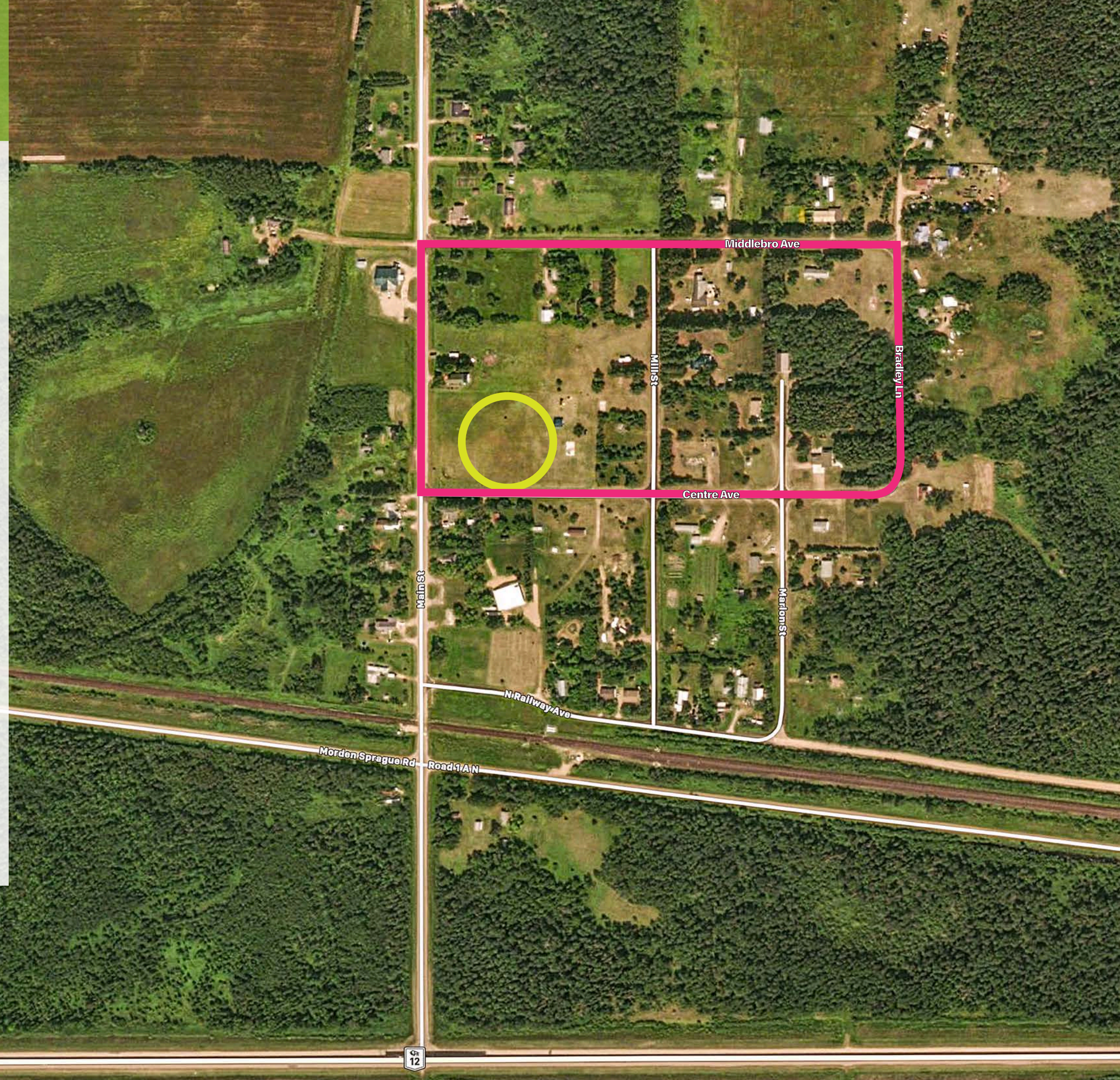
\$81,400 paved

Medium-term

Length: 1.32 miles

Cost: \$86,000 unpaved

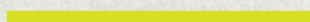
\$213,500 paved

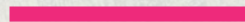


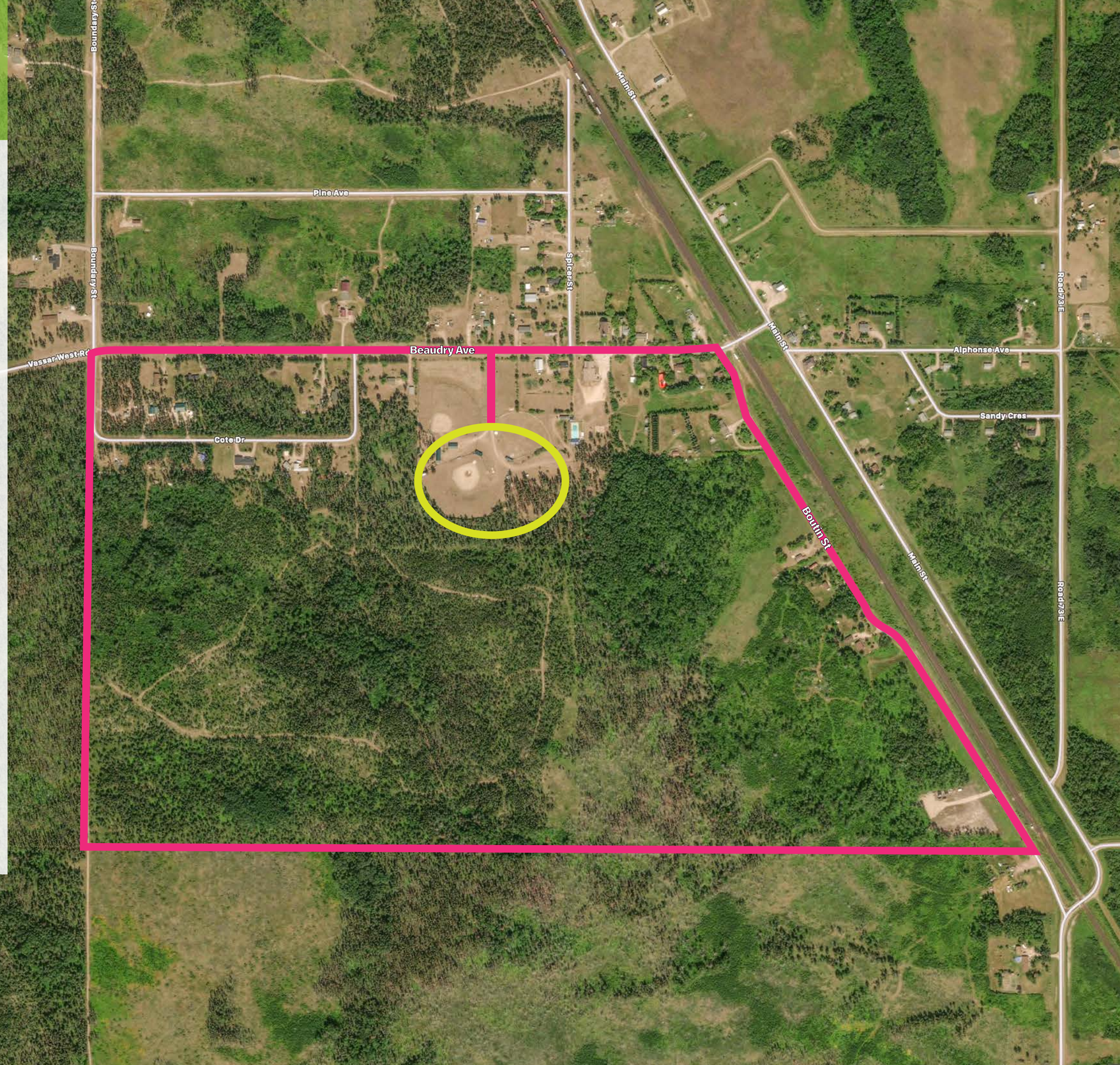
Vassar Trail

TOTAL LENGTH
3.2 miles

TOTAL COST
\$207,960 unpaved
\$516,900 paved

Short-term 
Length: 0.5 miles
Cost: \$33,160 unpaved
\$81,400 paved

Medium-term 
Length: 2.7 miles
Cost: \$174,800 unpaved
\$435,500 paved



South Junction Trail

TOTAL LENGTH
2.5 miles

TOTAL COST
\$163,880 unpaved
\$405,200 paved

Short-term

Length: 0.5 miles
Cost: \$33,160 unpaved
\$81,400 paved

Medium-term

Length: 2 miles
Cost: \$130,720 unpaved
\$323,800 paved

